



# Palm Antenna

## Features

### Compact Design

Designed to fit easily in your hand, the Palm Antenna makes data collection in tight spaces and along walls no longer an obstacle

### Integrated Tool

All-in-one GPR antenna, cable, survey wheel combo

### Durability

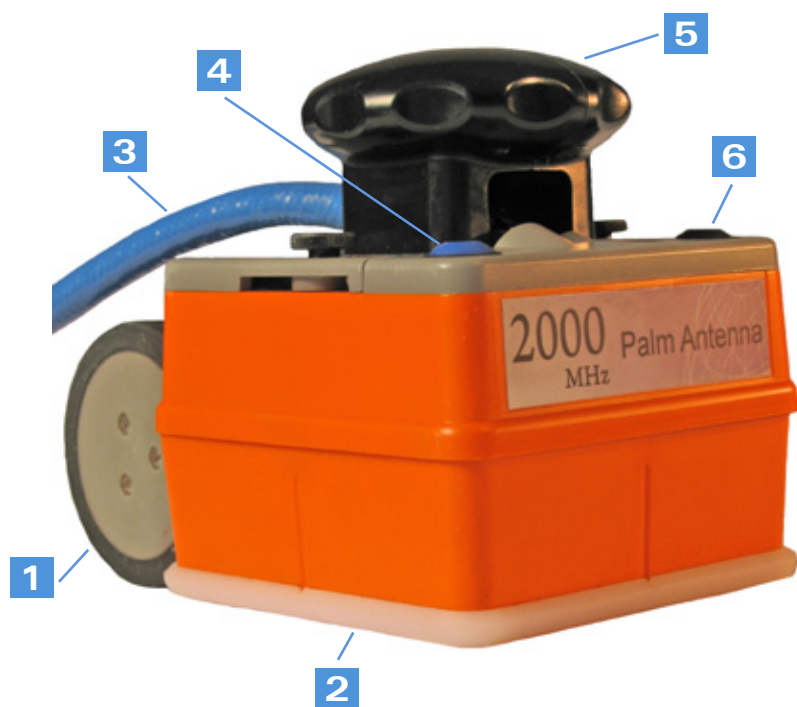
Plastic casing and replaceable skid plate for long-lasting performance

### Premium Mobility

The antenna itself is just over one pound, and total weight with cable is less than three and a half pounds—allowing it to be ultra-portable

### Value

This integrated tool provides the perfect blend of performance and cost



- |                             |                     |
|-----------------------------|---------------------|
| 1 Survey wheel with encoder | 4 Deadman switch    |
| 2 Replaceable skid plate    | 5 Removeable handle |
| 3 7-meter control cable     | 6 Marker switch     |



# Structural Inspection Solution in a Small Form-Factor



2.2 in.  
(56.5 mm)

4.1 in.  
(104.5 mm)

6 in. (154.7 mm)

Antenna without survey wheel: 3.6 in. (91.5 mm)

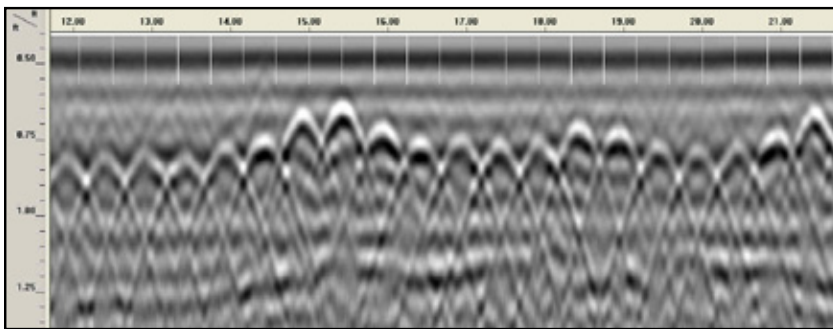
Internal Electronics with a  
Military Style Cable Connector



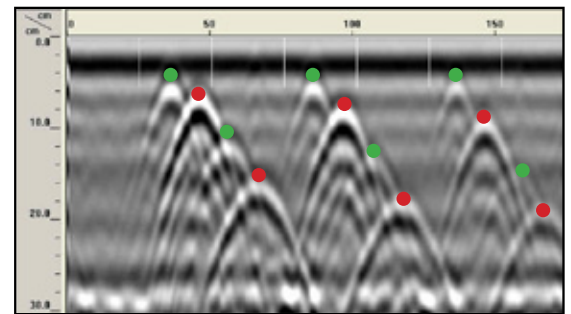
Custom Designed  
Rugged Transit Case



## Data Quality You Expect from GSSI



6 inches (15.24 cm) on-center wire mesh at varying depths



● Plastic Conduit ● Steel Rebar



## Specifications

Center Frequency: 2000 MHz  
 Depth Range: 10-12 inches (25-35 cm)  
 Antenna Weight: 1.1 pounds (.49 kg)  
 Cable Weight: 2.1 pounds (.95 kg)  
 Model Number: 62000

